

Board Consideration for Continued Day-Time Child Supervision K-5

December 16, 2020

Vision

All NUSD students
graduate as college
and career ready,
productive,
responsible, and
engaged global
citizens

Core Beliefs

**Every student
can learn and
succeed**

**Disparity and
disproportionality
can and must be
eliminated**

**Our
Diversity is a
Strength**

**Staff must be
committed,
collaborative,
caring, and
exemplary**

Goals 2017-2022

1. Increase student success in ELA, math, science, literacy, and civics
2. Prepare students to be college and career ready
3. Engage parents and families to support student success in school
4. Create safe and welcoming learning environments where students attend and are connected to their schools
5. Recruit, hire, train, and retain high quality staff who are committed, collaborative, caring and exemplary

Objectives

At the request of Trustees, staff is providing the Board with resources to consider regarding continuing child care/day camps beyond December 18, 2020.



Current Reality for Day-Time Child
Care in NUSD

About Day Camps

- Day Camps provide day care support for students grades K-5th, from 7:30am to 6:00pm, Monday - Friday.
- Day Camps were designed to serve no more than 40 students at each of the K-5/K-8 school sites with group sizes of 10:1 to comply with California Public Health Guidelines for Day Camps.
- NUSD took the action to only allow students to enroll in their home school site to keep student cohorts from mixing with other schools in case of a COVID incident.
- Since November, there have been 6 confirmed positive COVID incidents involving students or staff at the Center, in which 7 cohorts had to close to follow Sac County Public Health guidelines for quarantine. These closures impacted a total of 54 students and 12 staff for a total of 29 missed days of Day Camp.

Day Camp Timeline

8/5/2020 - Board approves (**almost \$800K of CARES Act Funding**) contract with The Sacramento Chinese Community Service Center (The Center) for 8/27- 11/20

11/19/2020 - All families with students currently attending the Day Camps were notified of the extension through 12/18/20.

AUGUST
2020

September
2020

October
2020

November
2020

December
2020

8/6/2020 - Site Staff reached out to families of at-risk students to recruit participation in Day Camps

11/18/2020 - Board approves to extend the contract (**almost \$215K of general funds**) with The Center for 11/30 - 12/18. **At that same meeting, the Board requested to review options for families as we continue to remain in distance learning.**

9/8/2020 - City of Sacramento Council approved \$500k in CARES Act Funding to offset cost to families to attend the Day Camps. **This allowed NUSD to sweep \$500,000 of the district money originally budgeted for this contract to be used for other Learning Continuity Attendance Plan COVID related needs.**

Operational Cost of Day Camps Aug 27th - Dec. 18th

Day Camp Services	Cost
Contract with The Center for Aug.27th - Nov.20th	\$781,434
Contract extension with The Center for Nov.30th - Dec. 18th	\$211,500
Contract Totals for 76 Days of Services	\$992,934
Student Support Services with Maximum	\$80,000
Technology Support	\$8,700
PPE and Sanitization Supplies	\$18,000
Total Cost for Days August 27th - December 18th	\$1,099,634

City of Sacramento Council approved \$500,000 in CARES Act Funding to offset cost to families to attend the Day Camps. **This allowed NUSD to sweep the \$500,000 of the district money originally budgeted for this contract to be used for other Learning Continuity Attendance Plan COVID related needs.**

Day Camp Enrollment Data

	Total Enrollment (as of Dec.9th)	September Avg Daily Attendance	October Avg Daily Attendance	November Avg Daily Attendance	December Avg Daily Attendance	Total Site Avg Daily Attendance
American Lakes	29	21	23	21	20	21
Bannon Creek	23	14	18	13	14	15
H. Allen Hight	33	21	24	26	26	24
Heron	25	13	21	15	15	16
Jefferson	37	31	32	31	29	31
Natomas Park	30	14	20	19	18	18
Paso Verde	31	31	29	27	23	27
Two Rivers	35	17	21	24	17	20
Witter Ranch	35	20	21	23	24	22
Total	278	181	210	198	186	194

Day Camp Enrollment Data

As of December 9th:

- Current **enrollment** has dropped to **278** students from 291 as reported in an November 13th Board Communication.
- 189 students applied for the Day Camp that then declined enrollment, dropped out, and/or never attended.
- Based on Daily Average Attendance, the following is a breakdown of Day Camps attendance:

Daily Average Attendance	70% or 194 students
Average Attendance past 2:30 pm	46% or 89 students
Average Attendance Past 4:00 pm	20% or 18 Students

Child Care - 4th "R"

The 4th "R" is providing Child Care at the 5 sites listed below. Families are responsible for all costs which can be up to \$565 a month per student depending on the family's income and the number of days a student attends.

Program Information

- 10:1 ratio, to comply with California Public Health guidelines for child care
- Monday - Friday, 7am - 6pm
- Average Daily attendance cannot be determined as student's daily attendance varies, based on days selected to attend (i.e., 2 day a week, 3 days a week, etc.)
- Families can contact 4th "R" for enrollment opportunities

Child Care by The 4th "R"

Heron	45
Natomas Park	24
Paso Verde	34
Two Rivers	30
Witter Ranch	33
Total	166

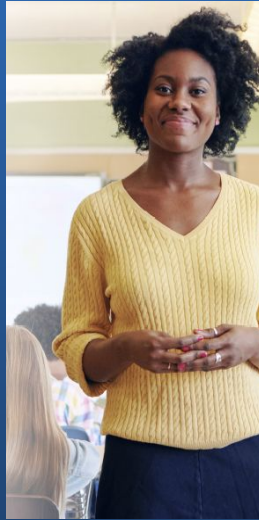
Additional Context

- With Sacramento County's recent move back to the purple tier (most restrictive to slow down the spread of COVID-19) and the Stay-at-Home Order for the Greater Sacramento Region, a return to a larger in-person program through our Transitional schedule is unknown.
- When students do return, if social distancing is still required, Day Camps will need to be reduced or eliminated at schools based on facilities available.
- Day camps are costly, and NUSD would struggle to continue the Day Camps in January without a significant stimulus package or the need to utilize reserves to pay cost.

Budget Considerations

- Funding will be paid with General Fund dollars/Reserves if there are no additional stimulus funds
- There will continue to be other costs incurred related to the pandemic
- Programs identified in the Learning Continuity & Attendance Plan are estimated to fully expand CARES Act funding

Other COVID-19 related expenditures that could require general funds to continue	Approx. Monthly cost
Wifi connectivity services	\$150,000
Chromebook refresh	unknown
Continued programs that support distance learning (i.e. Moderate/severe support program - \$150K, Virtual Tutoring- \$60K, Assessment - \$8K)	\$218,000
Long-term substitutes during distance learning	\$100,000
Ongoing PPE and Sanitization supplies	unknown



Consideration for Ongoing Day-Time
Child Care

Potential Ongoing Day-Time Child Care Services

- At the request of the Board of Trustees, NUSD staff looked at a variety of resources to consider to continue to provide day camps/child care while we are in Distance Learning.
- After looking at all viable options, staff identified 3 resources that could individually or in combination be implemented.
- The following slides presents each of the 3 resources, along with financial impacts and notes for considerations for each.

Considerations for Selecting The Center

- The Center operated Day Camps from August 27th - December 18th.
- Current program partner, serving both ALS & BCS for their after-school program.
- The Center is in alignment with our safety procedures and guidelines.
- Center staff has developed relationships with students, families, and NUSD staff that support students through distance learning.
- The Center would maintain cohorts at each K-5/K-8 school site, rather than providing a regional day camp.
- The Center would contract for a minimum of 1 month, but ideally 3 months.

Families could apply to Child Action (non-profit organization) to potentially receive subsidized child care cost assistance to eligible families.

- **If families do apply and qualify, this could reduce the district cost.** However, we are unable to determine the potential savings, as it is dependent on families eligibility.
- The Center has offered to help families to complete the application.

Contract Cost for Day Camps with The Center

School Site	Approximate District <u>Monthly</u> Cost for 7:30am - 4:00pm**	Approximate District <u>Monthly</u> Cost For 4:00pm - 6:00pm***
American Lakes*	\$4,000 (40 students)	\$3,500
Bannon Creek*	\$5,700 (40 students)	\$3,500
HAH, HS, JFS, NPE, PVS, TRE, WRE	\$122,000 (140 students)	\$24,500
Total	\$131,700	\$31,500
Monthly cost from Day Camps from 7:30 am - 6:00 pm = \$163,200		

*American Lakes and Bannon Creek will leverage their ASES programs to support the Day Camps

**This cost is based on 19 days, therefore dependent on the number of days in a month, the amount will vary slightly.

***The cost is based on the additional 2 staff (per site) at 4 hours.

Considerations for Catalyst Kids Childcare

- Catalyst Kids would be a new program to NUSD
 - The program would need to coordinate to ensure proper compliance in regards to safety guidelines.
 - It would take program staff time to become familiar with our students, families, and staff.
 - Cost of the program provides child care for up to 6 hours/day.
 - Students would be cohorted with a 14:1 Ratio.
 - **Catalyst Kids would need 30 days' notice for the stoppage of any services - child or program.**
- Provide a more regional approach to day camps/child care for students (not a day camp at every site)
 - Does not keep student cohorted at home site

As with The Center, families could apply to Child Action to potentially receive subsidized child care cost assistance to eligible families.

Contract Cost for Day Camps with Catalyst Kids Childcare

Duration of Service	Approximate District Monthly Cost* for 120 students**	Approximate District Monthly Cost* for 220 students***
Part-Time: 3 days/week	\$72,000	\$132,000
Full-Time: 5 days/week	\$109,440	\$200,640

**This cost is based on 12 (3 days a week) and 19 days (5 days a week), therefore dependent on the number of days in a month, the amount will vary slightly.*

*** Housing 40 students at three sites (i.e. one north, one central, one south) in alignment with allocated site space*

****Matching number of students served by The Center*

The 4th “R” Child Care Centers

4th “R” Child Care will continue at 5/6 pre-existing 4th “R” school sites in NUSD: Natomas Park, Heron, Paso Verde, Two Rivers, Witter Ranch

The 4th “R”: ***(Can continue with or without Resources 1 or 2)***

- Will continue to offer all day child care to currently enrolled families during distance learning.
- Would look to expand their program at their 5 current locations (Heron, NPE, PVS, TRE, WRE) by enrolling students that previously attended The Center’s Day Camps.
- Families would cover the cost to attend the 4th “R” program, using a sliding scale.

As with The Center, families could apply to Child Action to potentially receive subsidized child care cost assistance to eligible families.

Considerations for The 4th “R” Child Care Centers

- This resource does not require a district contribution to the child care cost.
- 4th “R” has limited capacity to enroll new students due to shortage in staff and the financial impact of operating the all-day childcare.

It is important to note:

- Trustees approved an agreement with the City of Sacramento for portables on the PVS K-8 school site at the December 9th Board meeting.
- As part of the agreement, the subsidy program, will commence **after** the 4th “R” program is able to operate at the new Paso Verde School campus.
- In addition, the subsidy program will extend for a period of at least 3 years, or longer as needed to provide at least \$158,084 in child care subsidies.

Resource Summary

Resource	Program Info	# of Students Served	Approximate Cost Per Month for Child Care	District Cost
The Center	7:30am - 6:00pm 10:1 Student Ratio All K-5/K-8 School Sites	220	\$163,200	Program Contract, Facilities Use (Custodial, Nutrition Services), Student Support, PPE
Catalyst Kids	6 Hours a day 14:1 Student Ratio 3 School Sites	120	\$109,440	Program Contract, Facilities Use (Custodial, Nutrition Services), Student Support, PPE
4th "R"	7:30am - 6:00pm 10:1 Student Ratio 5 School Sites	TBD	Up to \$565 for families (sliding scale available)	Facilities Use (Custodial, Nutrition Services), PPE

Board of Trustee Consideration

- There is no staff recommendation on this item. This information is being brought forward as a result of the Board requesting this information.
- The Board of Trustees is asked to consider the resources and whether they want to take action to extend any district funded day camps options.
- If the Board takes action, as a part of the action, Trustees will need to authorize the superintendent or designee to enter into a contract.

Questions?